



# SENIOR COMMUNITY RESOURCE GUIDE

By: Logan Jarrell BSN, RN  
NICHE - Age Friendly Coordinator





Beebe Healthcare was founded with a mission & vision to encourage healthy living, prevent illness, & restore optimal health within the community. Our vision is that Beebe Healthcare will be the healthcare system of choice for all people in Sussex County.

Beebe Healthcare has many departments, such as Population Health - that facilitate a series of community-based programs and services that aim to reduce health disparities, address the social determinants of health, reduce hospital admissions, & promote equitable access to care for all.

Sussex County is one of the fastest growing counties in the United States. About one in four Delawareans are age sixty and older and by the year 2040, the older population will make up nearly 34% of the state's population (Delaware Department of Health and Social Services, 2020). Beebe Healthcare is recognized as a community-based focused healthcare system that makes outreach & education a priority, based on proven need. It is Beebe Healthcare's commitment to deliver programs & services in-line with what underserved communities & the most vulnerable citizens need in order to get healthy and stay healthy.

The purpose of this guide is to provide our community with local resources and to bring care to the community. Our efforts make a positive difference in people's lives and underscore the value & continued presence of Beebe Healthcare's mission and vision.

# NICHE™

NURSES IMPROVING CARE FOR HEALTHSYSTEM ELDERS

NICHE (Nurses Improving Care for Healthsystem Elders) is a national program based from NYU Rory Myers College of Nursing. Beebe Healthcare has proudly been a NICHE member since 2011 & is recognized as a senior-friendly healthcare organization. Through NICHE, staff have access to resources & tools to implement, achieve, & sustain the NICHE program & to provide excellent care & outcomes for older adult patients. NICHE is designed to help hospitals & healthcare organizations address & improve the specialized needs of older hospitalized adults. NICHE is also an education program that trains staff to be aware of & identify special considerations when caring for the elderly & serve as a resource for their teams.

Logan Jarrell (Beebe Healthcare's NICHE - Age Friendly Coordinator) visits patients in the hospital who are age sixty-five years and above who are considered high re-admission risk & have a history of Dementia/Alzheimer's Disease. Logan assists these patients by providing them with local resources & supports their healthcare goals, by allowing patients to age in place. Logan also assists with diversional activities for patients suffering from Dementia/Alzheimer's Disease, such as with the Doll Therapy Program. Logan believes it is so important that members of the community know what local services exist in Sussex County.



Office: 302-645-3100 Ext. 2579

[ljarrell@beebehealthcare.org](mailto:ljarrell@beebehealthcare.org)



# Population Health Care Coordination Program

## Understanding Care Coordination:

- Care coordination is a healthcare approach that ensures patients receive well-organized, seamless care across multiple providers & settings.
- It involves healthcare professionals working together—such as doctors, nurses, specialists, & social workers—to manage a patient’s needs, reduce gaps in care, & improve health outcomes.
- By sharing information, coordinating treatment plans, & addressing both medical and social factors, care coordination helps prevent unnecessary hospital visits, reduces healthcare costs, & enhances the overall patient experience.
- It is especially important for individuals with chronic conditions, complex medical needs, or those transitioning between care settings, such as hospitals & home care.
- The goal of care coordination is simple: to provide the right care, at the right time, with better communication & improved patient support.

## Care Coordination at Beebe Healthcare:

There are several programs offered that aim to support high quality care of chronic diseases.

- **Longitudinal Care Coordination** provides ongoing support over an extended period to patients this includes Chronic Care Management which is covered by Medicare part B.
- **Transitional Care Coordination** aims to bridge & optimize transitions of care from different healthcare settings such as the hospital, acute rehab or skilled nursing facility.
- **Care Coordination** focuses on the achievement of successful health outcomes, improving the overall experience, increasing patient & family knowledge for disease self-management. These programs assist patients to manage their medical care and navigate interactions with their healthcare team in the communities where they live.

## Our Programs:

- Provide a Patient Centered Care Approach
- Provide Collaboration with patient’s provider for care need
- Provide Disease & Medication Education
- Address Social Needs



# Population Health Care Coordination Program

To contact, call the Population Health Intake Line 302-645-3337 Ext. 4  
Ask your provider to enter a referral in the electronic medical record



## Examples of Who We Can Help:

- Patients recently in hospital
- If you have COPD, CHF, Pneumonia, MI, Diabetes, Stroke, Sepsis,
- Those looking for assistance navigating home resources such as transportation
- Those looking for resources for future care needs



## Our Team:

- Advanced Care Providers
- RNs Care Coordinators
- Pulmonary Navigator, Respiratory Therapist
- CHW-Community Health workers to address Social Needs
- Diabetes Management-ADA Certified RNs & RDs that provide Diabetes Self-Management
- Education & Support including Medical Nutritional Therapy through individual and group settings



## History of Care Coordination:

- Care Coordination has evolved since the 1900s over time to improve patient outcomes by ensuring seamless communication between healthcare providers.
- By the late 20th century, integrated care models emerged, emphasizing teamwork among healthcare professionals. Case management, patient-centered medical homes, & electronic health records (EHRs) became key tools for improving coordination.
- Today, Care Coordination focuses on holistic, patient-centered approaches, using digital technology and multidisciplinary teams to enhance efficiency, reduce costs, & improve quality of care.



# Beebe Home Health Services



## WHY CHOOSE BEEBE'S HOME HEALTH SERVICES?

Since 1985, our highly skilled home health team has been providing comprehensive in-home medical care in coordination with and as directed by your medical providers. Individuals who have an acute illness, injury, or surgery, as well as those living with chronic medical conditions, may benefit from skilled home health care.

## COMPREHENSIVE CARE, AT HOME

Our team provides a comprehensive evaluation and assessment of your care needs. We work with you and your doctor to create an individual treatment plan and establish long-range plans to manage your health and medical conditions. Skilled home health services are usually covered by Medicare, Medicaid, and most private insurance. We'll verify your coverage and guide you every step of the way.

## BEEBE HOME HEALTH SERVICES PROVIDES:

- + Skilled Nursing
- + Physical Therapy
- + Occupational Therapy
- + Speech Therapy
- + Medical Social Work
- + Certified Home Health Aides
- + Home Safety Assessments
- + Telehealth

We are a not-for-profit organization accredited by the Joint Commission, a nationwide symbol of quality that reflects an organization's commitment to meeting the highest level of performance standards.

Call our team—  
available 24/7

**302-934-5830**

[beebehealthcare.org/services/home-health-services](https://beebehealthcare.org/services/home-health-services)

**Follow up with your primary care clinician 10 to 14 days after discharge.**



[beebehealthcare.org](https://beebehealthcare.org)  
*The Best Care is Here.*

# Cape Pharmacy



## PHARMACY SERVICES

Cape Pharmacy provides a full range of pharmacy services, ensuring that our customers receive the best possible care. Our services are designed to make your healthcare experience as easy and convenient as possible.

- Prescription Medications
- Medication Management Services
- Vaccinations & Immunizations
- Health Consultations & Wellness Advice
- Compounding Services
- Free Local Prescription Delivery in Lewes
- Prescription Pet Medications

**Cape Pharmacy**  
17252 North Village Main Blvd.  
Lewes, DE 19958

## WHY CHOOSE CAPE PHARMACY?

At Cape Pharmacy, we remain committed to the same personalized care and community focus that have made us your trusted community pharmacy. Our pharmacists and dedicated staff will continue to serve you, ensuring the same high level of service you've come to expect.

- Convenient Location
- Community-Focused Service
- Expert Pharmacists
- Comprehensive Care

Monday-Friday 9am to 6pm  
Saturdays 9am to 3pm  
biz@capepharmacy.com  
302-645-0090

# Beebe Healthcare Services

Beebe Healthcare and Beebe Medical Group, our employed physician group, have 40 locations throughout Sussex County for everything. Here's a highlight of some of our services.

To learn more, visit: [beebehealthcare.org/services](https://beebehealthcare.org/services)

## CARDIOVASCULAR

Precise heart, lung, and vein care that's close to home  
[beebehealthcare.org/services/cardiovascular](https://beebehealthcare.org/services/cardiovascular)

## CENTER FOR WEIGHT LOSS SURGERY

Your partner on your weight loss journey  
[beebehealthcare.org/services/surgery/bariatric-surgery](https://beebehealthcare.org/services/surgery/bariatric-surgery)

## CENTER FOR BREAST HEALTH

Accredited Breast Center, trailblazing surgeons  
[beebehealthcare.org/services/oncology/breast-health](https://beebehealthcare.org/services/oncology/breast-health)

## EMERGENCY SERVICES

We've planned for the unexpected. Two emergency departments to serve you.  
[beebehealthcare.org/services/emergency-department](https://beebehealthcare.org/services/emergency-department)

## ONCOLOGY SERVICES

One Beebe Oncology, two comprehensive cancer centers  
[beebehealthcare.org/services/oncology](https://beebehealthcare.org/services/oncology)

## ORTHOPAEDICS

Getting you back on your feet  
[beebehealthcare.org/services/orthopaedics](https://beebehealthcare.org/services/orthopaedics)

## PRIMARY CARE

Providers who care, with 13 locations throughout Sussex County and just one number to call 302-645-3332  
[beebehealthcare.org/services/primary-care](https://beebehealthcare.org/services/primary-care)

## SURGICAL SERVICES

Advanced surgical procedures, right here  
[beebehealthcare.org/services/surgery](https://beebehealthcare.org/services/surgery)

## WALK-IN CARE

When care can't wait, reserve a spot online  
[beebehealthcare.org/services/walk-care](https://beebehealthcare.org/services/walk-care)

In case of **EMERGENCY**, Beebe has two convenient locations.

### LEWES

424 Savannah Road  
Lewes, DE 19958

### SOUTH COASTAL

32750 Roxana Road  
Millville, DE 19945

Ready to care for you, wherever and whenever you need us. With convenient locations throughout the county (including four Walk-In Care Centers and two 24/7 Emergency Departments), the best care is now more accessible than ever before. And as our county grows, you can be confident and proud that we'll continue to grow with it.

With **WALK-IN** services locations throughout the county, the best care is now more accessible than ever before

### GEORGETOWN

21635 Biden Avenue  
Georgetown, DE 19947  
302-856-9729

### MILLVILLE

32550 Docs Place  
Millville, DE 19967  
302-541-4175

### MILLSBORO

28538 Dupont Boulevard  
Millsboro, DE 19966  
302-934-5052

### MILTON

23900 Milton Ellendale Hwy  
Milton, DE 19968  
302-684-5635

### REHOBOTH BEACH

19161 Healthy Way  
Rehoboth Beach, DE 19971  
302-645-3010



# Village Volunteers

Volunteer, non-profit organization dedicated to helping older adults age in place.

## **Transportation:**

- Medical appointments, including rehab, therapy sessions, testing
- Veterinarian appointments (member accompanies volunteer)
- Grocery shopping
- Hairdresser / barber visits
- Many other types of errands (member accompanies volunteer)

## **Home Maintenance:**

- Changing light bulbs
- Checking smoke alarms
- Installing screens and storm windows
- Hanging pictures
- Simple repairs
- Plant care

## **In-Home Support:**

- Household organization
- Help with checkbooks
- Labeling and organizing
- Cleaning out the refrigerator

## **Technology Help:**

- Programming cell phones, thermostats, and TV remotes
- Setting up email
- Performing simple computer tasks
- Assisting with a wide range of electronic gadgets



## **Friendly Calls & Visits:**

- Conversation and companionship
- Respite for family caregivers
- Sharing stories and memories
- Playing games or doing puzzles
- Phone calls to check on well-being, personal needs, or just to chat

**Village Volunteers • (302) 703-2568**

Location: 16686 Kings Highway • Suite B • Lewes, DE 19958

Mailing: P.O. Box 25 • Nassau, DE 19969

[info@villagevolunteer.org](mailto:info@villagevolunteer.org)

Lewes, Milton, Rehoboth Beach, Dewey Beach



See next page for pricing & contact information

# Membership Information

## Eligibility

Membership in SCVV allows older adults to stay in their homes as vibrant, independent members of our community. Members must be able to stand, pivot and walk under their own power or with the use of canes, walkers or wheelchairs. Volunteers cannot provide physical assistance such as lifting a member. Service-eligible memberships include up to twenty-five hours of volunteer services per month, averaging \$1.67 per hour for an individual membership and \$2.50 per hour for a household membership. The Lewes office provides services to Lewes, Milton, Rehoboth Beach and Dewey Beach.

For Information about  
memberships please scan code



Village Volunteers  
16686 Kings Highway Suite B  
Lewes, DE 19958

Village Volunteers  
P.O. Box 25  
Nassau, DE 19969

[www.villagevolunteer.org](http://www.villagevolunteer.org)  
[info@villagevolunteer.org](mailto:info@villagevolunteer.org)

# South Coastal Village Volunteers

South Coastal Village Volunteers brings together neighbors helping neighbors in a community of support. As we grow older, we can age in place and continue to live independently in our homes and communities.

SCVV coordinates volunteers to assist members with services such as transportation to various appointments and shopping, home visits, telephone check-ins, running errands, technology support and small household tasks. Currently we serve residents within the ZIP codes of Bethany Beach, Millville, Ocean View and South Bethany by providing volunteers for support, services and social interaction to enhance the lives of our members.

## Contact Information

[southcoastalvillagevolunteers.org](http://southcoastalvillagevolunteers.org)  
[info@southcoastalvillagevolunteers.org](mailto:info@southcoastalvillagevolunteers.org)  
PO Box 1453  
Bethany Beach, DE 19930  
302-500-1281



**SOUTH  
COASTAL  
VILLAGE  
VOLUNTEERS**

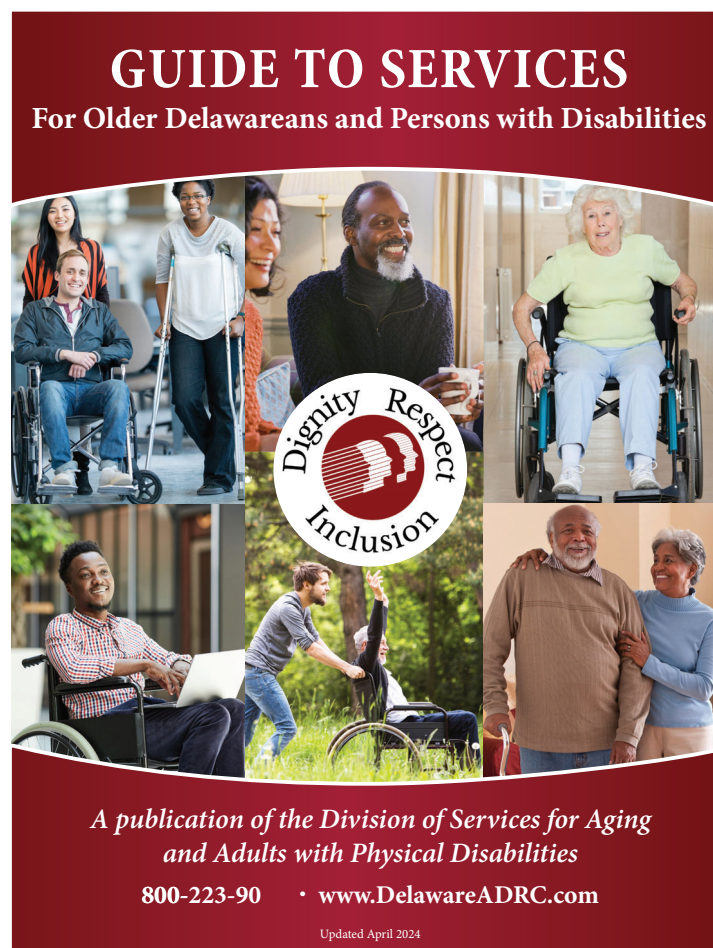
**Helping Older Adults Live Independently**

# Division Of Services For Aging & Adults With Physical Disabilities (DSAAPD)- Guide To Services For Older Delawareans & Persons With Disabilities

## What is the Guide to Services?

Contains a wealth of information about services & programs in our state. The guide is organized into numerous sections (such as in home services, transportation, food programs), each of which provides information on a specific subject, such as a type of service or program.

Available in print format & on the web. The web version is formatted for easy navigation. An advantage of the web version is that you can adjust the size of the print to suit your needs. To access the web version, visit [www.dhss.delaware.gov/dsaapd](http://www.dhss.delaware.gov/dsaapd).



# Delaware Aging & Disability Resource Center (ADRC)

What is the Delaware Aging & Disability Resource Center (ADRC)?

One-stop access point for aging & disability information & resources in Delaware, specifically in your county.

Learn more about resources available in Delaware, decide what services would be best for you or someone you know, get help in finding services that you need, & get a personal emergency response system (Life Alert).

If you need more information or assistance, contact the Delaware ADRC at

[www.DelawareADRC.com](http://www.DelawareADRC.com)

[DelawareADRC@state.de.us](mailto:DelawareADRC@state.de.us)

1-800-223-9074 (24/7 phone service)

Open Monday - Friday 0800 - 1630



## WELCOME TO THE DELAWARE AGING & DISABILITY RESOURCE CENTER

We connect Delawareans to aging and disability resources and services throughout the First State.

[Search by Provider Name](#)

# Delaware 211

Connects people in Delaware to essential resources throughout the state. Our service is free, confidential, & available in multiple languages.

Live chat Monday-Friday 0800 - 2100

1-00-560-3372

Text your zip code to 898-211

info@delaware211.org

2·1·1

Delaware

## Help Starts Here

**Delaware 211** connects people in Delaware to essential resources throughout the state. Our service is free, confidential, and available in multiple languages.

I need help with...

Zip Code

Distance ▾

Search

[Search by Provider Name](#)

# Transportation

- **The following agencies provide transportation to their respective senior center.**
- Some centers may also offer transportation to local shopping venues and provide volunteer transportation for other needs.
- Please contact the senior center directly for additional information.

## **Absalom Jones Senior Center**

310 Kiamensi Road  
Wilmington, DE 19809  
Phone: (302) 995-7636

## **Bethel Caring Hands, Inc**

604 N. Walnut Street  
Wilmington, DE 19801  
Phone: (302) 658-1676

## **Brandywine Community**

3301 Green Street  
Claymont, DE 19703  
Phone: (302) 792-2757

## **Cape Henlopen Senior Center**

11 Christian Street  
Rehoboth Beach, DE 19971  
Phone: (302)227-2055

## **CHEER Transportation**

546 S. Bedford Street  
Georgetown, DE 19947  
Phone: (302) 856-5187

## **Frederica Senior Center**

P.O. Box 165,  
216 S. Market Street  
Frederica, DE 19946  
Phone: (302)335-4555

## **Harrington Senior Center**

102 Fleming Street  
Harrington, DE 19952  
Phone: (302) 398-4224

## **Harvest Years Senior Center**

30 South Street  
Camden, DE 19934  
Phone: (302) 698-4285

## **Jewish Community Center**

101 Garden of Eden Road  
Wilmington, DE 19810  
Phone: (302) 478-5660

## **Laurel Senior Center**

113 N. Central Avenue  
Laurel, DE 19956  
Phone: (302) 875-2536

## **Lewes Senior Center**

32083 Janice Road  
Lewes, DE 19958  
Phone: (302)645-9293

## **Lillian Smith Senior Center**

410 Main Street  
Clayton, DE 19938  
Phone: (302) 653-6119

## **Lutheran Senior Services**

1201 N. Harrison Street  
Wilmington, DE 19806  
Phone: (302) 652-3737 Ext. 104

## **Mamie Warren Senior Center**

1775 Wheatley's Pond Road  
Smyrna, DE 19977  
Phone: (302) 653-4078

## **Mid-County Senior Center**

First Regiment Road  
Wilmington, DE 19808  
Phone: (302) 995-6728

## **Milford Senior Center**

111 Park Avenue  
Milford, DE 19963  
Phone: (302) 422-3385

## **Modern Maturity Center**

1121 Forrest Avenue  
Dover, DE 19904  
Phone: (302) 734-1200 Ext. 113

## **M.O.T Senior Center**

300 South Scott Street  
Middletown, DE 19709  
Phone: (302) 378-4758

## **Nanticoke Senior Center**

1001 West Locust Street  
P.O. Box 406  
Seaford, DE 19973  
Phone: (302) 629-4939 or 629-4940

## **Newark Senior Center**

200 While Chapel Drive  
Newark, DE 19713  
Phone: (302) 737-2336 Ext. 15

## **New Castle Senior Center**

400 South Street  
P.O. Box 30  
New Castle, DE 19720  
Phone: (302) 326-4209

## **Peoples Settlement Assoc.**

408 East 8th Street  
Wilmington, DE 19801  
Phone: (302) 658-4133 Ext. 321

## **Rosehill Community Center**

19 Lambson Lane  
New Castle, DE 19720  
Phone: (302) 656-8513

## **Sellers Senior Center**

500 Duncan Road  
Wilmington, DE 19809  
Phone: (302) 762-2052

## **St. Anthony's Community**

1703 West 10th Street  
Wilmington, DE 19805  
Phone: (302) 421-3721

## **St. Patrick's Senior Center**

107 East 14th Street  
Wilmington, DE 19801  
Phone: (302) 652-6219

## **West Center City Adult Ctr.**

501 N. Madison Street  
Wilmington, DE 19801  
Phone: (302) 658-5332

## **Wilmington Senior Center**

1901 N. Market Street  
Wilmington, DE 19802  
Phone: (302) 651-3400

# Transportation



**CHEER Center**  
302-515-0001



**DART**  
800-652-DART



**ModivCare**  
1-866-412-3778



**Uber**  
[www.uber.com](http://www.uber.com)



**Lyft**  
[www.lyft.com](http://www.lyft.com)

“

*GoGo's services have given me a lot of freedom!*

— Brett, a GoGo customer

”



## our story

Our CEO Justin was inspired to create GoGo by his Grandma Betty. She wanted to use “on-demand” services, but wasn’t confident they would be able to keep up with her needs. Her idea for GoGo was simple: make on-demand services work reliably for me. Now, Grandma Betty and hundreds of thousands of people across the United States and Canada count on GoGo to lead independent lives.

## Our Mission

We make on-demand services accessible and reliable so you can thrive independently and confidently at home.

## Our Approach

The most important part of GoGo is what happens behind the scenes. We screen and monitor each request to make sure it meets your needs and preferences. From making sure the car has enough leg room to making sure you get your exact, favorite milk. We check-in and we follow-up, every time.

## Contact Us

 [support@gogograndparent.com](mailto:support@gogograndparent.com)

 1 (855) 464-6872

 [www.gogograndparent.com](http://www.gogograndparent.com)

 @GoGoGrandparent on Facebook, Instagram, YouTube, Twitter, and LinkedIn

By using GoGo, you agree to our Terms and conditions and the terms and conditions of our partners at <https://gogograndparent.com/terms>. You can also call in to request these terms be mailed to you.

# Your life on the Go is here.

 Independence

 Support

 Reliability

 **GoGo**

**(855) 464-6872**

Rev070821

## Rides



### Request a reliable ride, whenever you need one.

With just a phone call to a friendly operator, we can arrange convenient ride requests for you around the clock. Pickups happen within 15 minutes, or you can schedule rides in advance.

#### How to order a ride:

- 1 Call us at **1 (855) 464-6872**. Listen to the menu and press the digit that is right for you. For example:
  - » **Press 1** to get picked up at home
  - » **Press 2** to get picked up where you were dropped off
  - » **Press 6** to order a ride somewhere else
- 2 As a driver accepts your request, you'll hear their name, car color, make/model, license plate, and ETA.
- 3 Once your ride is on the way, keep your phone handy, the ringer all the way up, and the line free. You'll get a call when your driver is near.
- 4 If you need to speak with your driver, call us and **Press 3** any time.

## Groceries



### Get your groceries delivered conveniently to your door.

We can help you order groceries, vitamins, and household supplies without an app. No more waiting in lines, spending hours at the store, or carrying heavy bags!

#### How to order groceries:

- 1 Get your shopping list ready! If needed, we can help you think through some alternative items, in case your first choice item is not available.
- 2 Call us toll-free at **1 (855) 464-6872** and **Press 8** to be connected to our grocery team, or email your list to **groceries@gogograndparent.com**. We'll save your specific delivery instructions for future orders.
- 3 Tell us if you want to order right away (deliveries are usually within 3 hours), or if you would like to save or schedule your order for later.
- 4 We will send you a message when your groceries are on the way!

## Meals



### Order the meals you crave from restaurants easily.

We can help you order takeout and gourmet meals that meet your dietary preferences, just with a phone call. Through our partners, we are connected to thousands of restaurants.

#### How to order meals:

- 1 Call us at **1 (855) 464-6872** and **Press 7** to be connected to our Gourmet team 7 days a week.
- 2 Tell us what you'd like to eat, and if you have any dietary or allergy restrictions. We can share meals recommendations in your area.
- 3 We can save your orders so you can request them even faster next time!
- 4 Your meal should arrive within **20-90 minutes**. Enjoy!

Interested in medication delivery, home chores or other helpful services? Call us!

# Local Food Assistance Programs

## Meals on Wheels

302-656-3257

info@mealsonwheelsde.org mealsonwheelsde.org



## CHEER

302-515-0001

cheerde.com



## Center

## Food Bank of Delaware

302-424-3301

fbd.org



## Mom's Meals

1-877-508-6667

mommeals.com



Apply online for Delaware Food Supplement Program (SNAP) by phone  
1-866-843-7212 or <https://dhss.delaware.gov/dhss/dss/foodstamps.html>



# Cheer Center

## **Georgetown**

20520 Sand Hill Rd  
Georgetown, DE 19947  
302-854-9500

## **Greenwood**

1 Schulze Rd  
Greenwood, DE  
302-349-5237

## **Lewes**

3421 1 Wroods Edge D  
Lewes, DE 19958  
302-645-3551

## **Long Neck**

26089 Long Neck Rd  
Millsboro, DE 19966  
302-945-3551

## **Milton**

24855 Broadkill Rd  
Milton, DE 19968  
302-684-4819

## **Ocean View**

30637 Cedar Neck Rd  
Ocean View, DE  
19970  
302-539-2671

## **Roxanna**

34314 Pyle Center Rd  
Frankford, DE 19945  
302-732-3662

## **Services**

- Meal services, home delivery
- Transportation
- Mobile mini mart
- Adult day program
- Memory cafe
- Caregiver resources
- Personal assistance
- Housekeeping
- Companionship



# Local Senior Centers

## **Lewes Senior Activity Center**

32083 Janice Road  
Lewes, DE 19958  
302-645-9293  
[Lewesseniorcenter.org](http://Lewesseniorcenter.org)



## **Cape Henlopen Senior Center**

11 Christian Street  
Rehoboth Beach, DE 19971  
302-227-2055 [Capehenlopeseniorcenter.org](http://Capehenlopeseniorcenter.org)



# Care Patrol



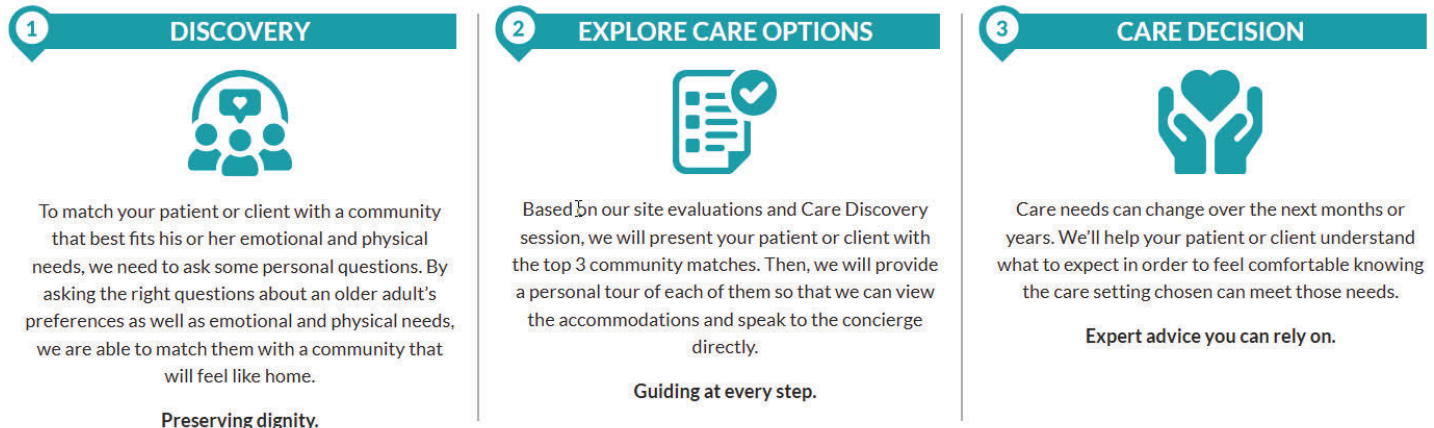
## CARE Patrol™ of Delmarva

Amy Feger | (302) 321-6800



Provides senior care options based on care needs & quality of life for your loved ones. Our services are at no cost to you. We help families find:

Assisted living | Memory care | Independent living | Nursing homes | In-home care



Contact Amy Feger (local senior care advisor) at 302-321-6800 or visit [carepatrol.com/delmarva](http://carepatrol.com/delmarva)

# Lions Club

## Milton Lions Club

### Medical Equipment

The Milton Lions maintain an adequate supply of medical equipment for those in need of such equipment. Equipment will be loaned out to individuals free of charge. We carry hospital beds, wheelchairs, crutches, walkers, etc. We also accept donations of medical equipment that is in good working condition. If you need such equipment or would like to donate equipment, please contact Maurice McGrath at 347-920-6634 for more details.

### Eye Exams & Glasses

The Milton Lions offer assistance to individuals who cannot afford the costs of eye care to residents of Milton & Georgetown, Delaware. Please contact Brenda Coverdale at cov4852@comcast.net or 302-684-8737 for further information. We also recycle your old glasses. Find our eyeglass recycle boxes at the following locations: Milton Public Library, Milton Family Practice, Walgreens at Milton Park, & Sterling Optical at Milton Park.

## Lord Baltimore Lions Club

Serves Millville, Clarksville, Ocean View, Bethany Beach, Frankford, Dagsboro. Home Medical Equipment Loaner Program, Eyeglasses & ramp building. Karl Gude at 302-539-3498, or email Scott at sbrannan1@yahoo.com.

## Rehoboth Beach Lions Club

Contact Tom Foster at 302-644-6652 for more information.

We participate with the combined efforts of other Lions Clubs in the area to build wheelchair ramps for families that are unable to provide for them. Food baskets were prepared & delivered to needy families during the Thanksgiving and Christmas holidays. We continue to collect used eyeglasses, & we provide eyeglasses & loans of wheelchairs & other ambulatory equipment to local individuals that can't afford the expense.

## Dewey Beach Lions Club

The Dewey Beach Lions Club continues to provide support for needy local families by constructing wheelchair ramps, providing loans of wheelchairs, eyeglasses, hearing aids, and other ambulatory equipment.

If you or someone you know needs one of these services, please feel free to contact us by filling out the form on [www.dblions.org/serve/programs](http://www.dblions.org/serve/programs). A Lions Club Member will contact you as soon as is possible to discuss the details of your situation & to inform you of how we may be of service. Contact (302) 727-5179.

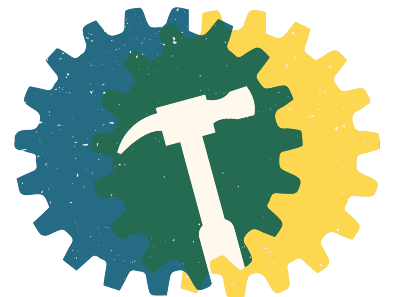
## Lewes Lions Club

We purchase eyeglasses or hearing aids for those in need & supply medical equipment as we are able. We support our Zone's effort to build entry ramp for those in need of them for their homes. Vision screening, assist local residents with hospital equipment. Food Baskets are delivered in December to assist those in need; generally, we deliver 50 with Hams or Turkeys. Email [leweslionsclub@gmail.com](mailto:leweslionsclub@gmail.com) for more information.

# Habitat For Humanity

Home Repair Program that performs repair services to help low-income homeowners impacted by age, disability & family circumstances reclaim their homes with pride & dignity. Our team will work on floors, decks, ramps, painting, electrical, plumbing, & more! Our goal is to keep you in your home.

[www/sussexcountyhabitat.org](http://www.sussexcountyhabitat.org)  
[kevin@sussexcountyhabitat.org](mailto:kevin@sussexcountyhabitat.org)  
302-855-1153  
206 Academy Street  
Georgetown, DE 19947



# Easterseals Community Outreach Program

## Do you need?

- An alternative mouse for your computer
- An inflatable bathtub
- Easy to handle silverware
- Shirts with magnets to avoid buttons
- Electronic pill reminders
- Equipment to ease the physical burden of caregiving

## The resource center offers:

- Staff on hand to provide tours & answer questions about equipment
- Virtual tours by appointment
- Hundreds of devices on display for you to try
- Information about local services & stores

de.easterseals.com  
resources@esdel.org  
302-221-2087



# Advanced Directives

In Delaware, if you are at least 18 years old, you may make a written Advance Health Care Directive. The directive tells your medical providers who you want to make decisions when you are unable. The advance directive can also indicate which life-sustaining treatments & other medical treatments you will accept or refuse when you are terminally ill, permanently unconscious, or medically frail.

You can also use the advance directive to indicate the kinds of life-sustaining interventions you may or may not want when your doctor determines that you are at the end of your life, & you are unable to make medical decisions. Beebe Healthcare encourages every adult living in Sussex County to complete a directive & to share it with others. Regardless of your age or health, an Advance Health Care Directive protects **your choices**

Under Delaware law, Advance Health Care Directives have two sections:

- 1) Power of Attorney for Health Care
- 2) Instruction for Health Care Decisions

The Power of Attorney for Health Care allows you to name another person as your agent to make healthcare decisions for you if your medical condition makes you unable to do so. You can appoint any adult over the age of 18 to be your agent. However, if you are a resident of a long-term care facility, the agent cannot be an employee of the facility unless he/she is related to you.

An Instruction for Health Care Decisions is a written statement of your choices about health care treatment. It includes your instructions for treatment when you are terminally ill, permanently unconscious or suffer from serious illness or frailty.

If you want to initiate an Advance Health Care Directive, you must do so while you are still capable & competent to make health care decisions. Two witnesses who are at least 18 years old must watch you sign the Advance Health Care Directive. You must choose witnesses who are not members of your family, will not inherit anything from you when you die, & do not have to pay for your care. If you are in a hospital, nursing home or similar facility when you sign your written instruction, you must choose witnesses who are not employees of the facility. In addition, if you are in a nursing home or similar facility, one of the witnesses must be a Long-Term Care Ombudsman or the Public Guardian. If you do not have an Advance Health Care Directive & you are unable to make decisions, a member of your family will not be able to make an advance directive for you, but will be asked to make healthcare choices for you.

Visit <https://www.beebehealthcare.org/patients-visitors/advance-healthcare-directives> to learn more & download a copy of the “Advance Health Care Directive Guide & Form” or ask your healthcare provider or a Beebe team member for a copy.



Ensure that after you fill out your advance directive, your healthcare provider receives a copy & bring it with you when you go the hospital!

# Hospice Versus Palliative Care

Palliative care and hospice care are similar, but there are some key differences. Both palliative care and hospice care are focused on the needs of the patient and their quality of life. Palliative care focuses on maintaining the highest quality of life while managing treatment and other needs. Hospice care specifically focuses on the period closest to death.

Knowing the specific differences between hospice and palliative care can help someone decide what level of care is best. If your health changes, the kind of care being received can be changed.

Question	Palliative Care	Hospice Care
<b>What is the focus?</b>	Palliative care focuses on easing pain and discomfort, reducing stress, and helping people have the highest quality of life possible.	Hospice care focuses on quality of life when a cure is no longer possible, or the burdens of treatment outweigh the benefits.
<b>Who can receive this type of care?</b>	Palliative care is a resource for anyone living with a serious illness.	People can be enrolled in the hospice Medicare benefit if their doctor thinks they have fewer than six months to live. The benefit may be extended multiple times if a physician certifies. Hospice services are also offered to persons with Medicaid or private insurance. Talk to your doctor if you think a hospice program might be helpful.
<b>Can I still get treatment for my illness?</b>	You can receive palliative care while also receiving curative and therapeutic care for an illness, such as chemotherapy, dialysis, or surgery.	You will not receive curative treatment for your specific illness, but you will receive medicine that enhances quality of life, such as treatment for high blood pressure or anxiety.
<b>What does this type of care include?</b>	Palliative care services may include pain and symptom management, care coordination with your healthcare team, assistance with developing your plan of care, help with insurance forms and options for care and housing, help with advance directives, and spiritual care.	Hospice care includes pain and symptom management, emotional support, medications and medical supplies, coaching for caregivers, grief support, and may include special services like speech and physical therapy when needed. Medicare qualified hospices must provide a 24/7 call service.  Hospice care will also make short-term inpatient care available when pain or symptoms become too difficult to manage at home or when caregivers need respite time.

# Hospice Versus Palliative Care

<p><b>Where can I get this type of care?</b></p>	<p>Palliative care may be provided in any care setting, such as the home, a hospital, nursing homes, and outpatient clinics.</p>	<p>Hospice care can be provided wherever the patient lives, including nursing facilities and long-term care facilities.</p>
<p><b>Who provides this type of care?</b></p>	<p>Most palliative care is provided by a specially trained team of doctors, nurses, and other specialists. They will work with your primary care doctor and specialists.</p>	<p>Hospice care is provided by a team that focuses on the patient's needs. The team usually includes clergy, home health aides, hospice physicians, nurses, social workers, trained volunteers, and other specialized therapists if needed. A patient's personal physician may also be included.</p> <p>Although hospice provides a lot of support, if the patient lives at home, the day-to-day care is provided by the inner circle or paid home health aides.</p>
<p><b>Who pays for this type of care?</b></p>	<p>Medicare, Medicaid, and many insurance plans will cover the medical portions of palliative care. Veterans may be eligible for palliative care through the VA. Check with your doctor and insurance to see what will be covered in your situation.</p>	<p>Hospice care is most often paid for as a benefit of Medicare. Hospice may also be paid for as part of a Medicare Advantage plan, by state Medicaid plans, or by private insurance. Discuss the source of payment and services covered with your hospice team.</p>
<p><b>How long can I receive this type of care?</b></p>	<p>Palliative care can be provided as long as it's needed. Talk to your doctor about what level of care might be best for you as your health changes.</p>	<p>Hospice care can be initiated and continued so long as your doctor believes you likely have fewer than six months to live.</p> <p>Sometimes, people receiving hospice care live longer than six months and the care can be extended. You can get hospice care for two 90-day benefit periods, followed by an unlimited number of 60-day benefit periods.</p> <p>It is also possible to leave hospice care if a patient's condition improves or they decide they wish to resume curative care and return to hospice care later.</p>



Visit <https://www.beebehealthcare.org/services/palliative-care>

# Beebe Hospice Resource Guide

## Delaware Hospice

1-800.838.9800

www.delawarehospice.org

100 Patriots Way, Milford, DE 19963

302-856-7717

Nonprofit hospice serving Delaware and Pennsylvania's southern Chester and Delaware Counties

## Delaware Hospice/ Delaware Hospice Center (Milford and Wilmington)

- + Pain Management Home
- + Care Assistance
- + Medication Management
- + Grief Support
- + GIP

## Delaware Palliative Care

Focuses on managing your symptoms and improving your quality of life while you continue to pursue treatment options with your own doctors.

## Honoring Choices Delaware

Helping people make informed choices about end-of-life care reflects their values and honors their dignity.

## Delaware Transition Care

Offers support, education, guidance, and resources at no cost to those living with a serious illness.

## Childrens Programs

- + Katybug Pediatric Palliative Care
- + New Hope Childrens Grief Support

## Christiana Care-Accent Care

1-866-443-9858

National Leader in home health services, personal care services and hospice care serving all of Delaware

## Hospice Care/Inpatient Center

- + Routine
- + Inpatient/GIP (Newark and Wilmington)
- + Respite
- + Continuous Care
- + Grief and Psychosocial Support
- + Music Therapy
- + Namaste Care to promote relaxation

## Palliative Care

This specialized care is focused on relief from symptoms while supporting emotional, social and spiritual well-being.

- + Right Path® Palliative Care
- + Telehealth

## Open Access

Allows patients currently receiving medical treatments and/or experiencing intense psychosocial issues access to hospice services earlier, a blended model between curative and palliative care.

## Vitas Health Care

1-866-647-1523

30265 Commerce Dr.

Millsboro, DE 19966

P-302-451-4000

F-302-451-4050

VITAS hospice team members visit you wherever you call home—whether in a private home, nursing home, assisted living facility or long-term care facility—throughout the state of Delaware.

Four Levels of Care:

- + Hospice Homecare
- + 24/7 Telecare Services
  - Continue Home Care Intensive Comfort Care- intensive level of care to include nursing care from 8 to 24 hours a day.
- + Inpatient Care
  - When a patient's needs cannot be managed at home, VITAS inpatient hospice units and special arrangements at other local facilities provide hospice care around the clock until the patient can return home.
- + Respite Care
  - Limited to up to five consecutive days, respite care provides a brief "respite" for the patient's primary caregiver by admitting the home care patient to an institutional setting without meeting the "inpatient" pain and symptom management criteria.

## Compassionate Care / Amedisys

302-856-2659

Compassionate Care Hospice joined Amedisys family, which is a Nationwide organization in February 2019 serving all of Delaware.

## Hospice Care

- + 24/7 team availability to including skilled nurse and aide services.
- + Pain Management
- + Volunteer Companions
- + Grief Support
- + Social Services

## Palliative Care

### Dementia Speciality Program Highlights

- + Focus on improving quality of life while managing the symptoms of dementia.
- + Specialized care from a diverse team of professionals who have intensive training in end-stage dementia care.
- + Dementia care is backed by the latest research and goes beyond medications.
- + Personalized hospice and palliative care planning tailored to the older adult's needs and wishes.

### Cardiac Connections

- + Heart failure home management program

### Pulmonary Connection

- + End stage lung disease home management program

# Support Groups

## Dementia/Alzheimer's Disease

### Alzheimer's Association

108 N Bedford St  
Georgetown, DE 19947  
302-854-9788  
24/7 Hotline: 800-272-3900

### Ocean View CHEER Center

30637 Cedar Neck Rd  
Ocean View, DE 19970  
Every 3rd Thursday from 1:00 - 3:00

### Long Neck CHEER Center

26089 Long Neck Rd  
Millsboro, DE 19966  
302-945-355  
Every 1st Tuesday from 1:00 - 3:00

### Greenwood CHEER Center

41 Schulze Rd  
Greenwood, DE  
302-349-5237  
Every 1st Thursday from 1:00 - 3:00

### Lewes Public Library

111 Adams Ave  
Lewes, DE 19958  
302-645-2733  
Every Tuesday from 10:00 - 12:00

### Lofland Park Center

715 East King Street  
Seaford, DE 19973  
302-628-2000  
Every 2nd Tuesday from 1:30 - 3:00

### Georgetown Public Library

123 West Pine Street  
Georgetown, DE 19947  
302-856-7958  
Every Tuesday from 2:00 - 4:00

### Easter Seals

22317 Dupont Blvd,  
Georgetown, DE 19947  
302-253-1129 or 203-324-4444

### Division of Aging

1-800-223-9074

### CHEER Respite Care

302-854-9555

### Delaware Hospice

Virtual via Microsoft Teams  
<https://delawarehospice.org/patient-caregiver-resources/dementia-support-groups/>  
Must register by calling  
Melissa Cheshire-Lynch (302-478-5707)  
or [supportgroup@delawarehospice.org](mailto:supportgroup@delawarehospice.org)  
Last Wednesday of the  
month from 11:00 -12:00

Virtual via Microsoft Teams  
Virtual via Microsoft Teams  
<https://delawarehospice.org/patient-caregiver-resources/dementia-support-groups/>  
Must register by calling  
Melissa Cheshire-Lynch (302-478-5707)  
or [supportgroup@delawarehospice.org](mailto:supportgroup@delawarehospice.org)  
Every 2nd Tuesday from 2:00 - 3:00



# Delaware Hospice Dementia Care Program

## DEMENTIA CARE PROGRAM

855-335-4677  
delawarehospice.org

### Our Dementia Care Program: Support for Living with Dementia

Delaware Hospice, Inc. is participating in the "Guiding an Improved Dementia Experience" (GUIDE) program by the Centers for Medicaid and Medicare Services (CMS), offering specialized services for dementia care and support for caregivers (a relative or unpaid non-relative who helps with activities of daily living). Our GUIDE-approved Dementia Care Program offers comprehensive support, ensuring patients and caregivers receive the care and resources necessary to navigate the challenges of dementia.

#### Dementia Care Goals



**Improve Quality of Life** for people living with dementia by providing comprehensive support by addressing their behavioral health and functional needs



**Enhance Support** for caregivers of people living with dementia through caregiver skills training and referrals to community-based social services and supports



**Support Independence** by helping people with dementia remain safe in any setting

#### Program Benefits



Coordination of care for dementia and co-occurring conditions and improving transitions between community, hospital, and post-acute settings



Respite Services can be provided, up to an annual cap so caregivers may take a break when they need to\*



Prevent or delay long-term nursing home care for as long as appropriate

*\*Qualified beneficiaries of Dementia Respite Services will receive support from local partners: in-home respite providers, adult day centers and nursing homes.*

#### Program Eligibility Criteria

To be eligible for the GUIDE-approved Dementia Care Program, beneficiaries must:

- Have a diagnosis of dementia, as confirmed by clinician attestation
- Not reside in a long-term nursing home
- Be enrolled in Medicare Parts A and B (not enrolled in Medicare Advantage, including Special Needs Plans and PACE)
- Have Medicare as their primary payer
- Not be enrolled in Medicare hospice benefit

If you do not qualify for this program, alternative support may be available through another Delaware Hospice, Inc. program.

#### Program Enrollment

Enrollment begins with an initial assessment, where a team member will meet with the patient and caregiver to complete questionnaires.

Accurate and thoughtful responses are crucial to ensure proper benefit assignment.

Qualified beneficiaries will be placed into one of five tiers based on disease stage and caregiver status by CMS. Each tier reflects care needs and intensity, with benefits increasing by tier to match the level of support required.

DELAWARE<sup>™</sup>  
HOSPICE  
DELAWARE<sup>™</sup>  
PALLIATIVE

Delaware Hospice is accredited by the Joint Commission and provides care throughout Delaware and southern Chester and Delaware Counties in Pennsylvania. It is state licensed, Medicare/Medicaid certified. As a recipient of Federal financial assistance, Delaware Hospice, Inc. does not exclude, deny benefits to, or otherwise discriminate against any person on the basis of race, color, national origin, disability, sex, or age in admission to, participation in, or receipt of the services and benefits under any of its programs and activities whether carried out by Delaware Hospice directly or through a contractor or any other entity with which Delaware Hospice arranges to carry out its programs and activities. | Tax ID# 51-0258883

©2024 Delaware Hospice, Inc.



**Get the support you need. Call us today! 855-335-4677**



**Visit <https://delawarehospice.org/dementia-care-program/>**

# Delaware Hospice Dementia Care Program

## Additional Support with Palliative Care

If your loved one has been diagnosed with dementia or Alzheimer's, additional support is available through our Delaware Palliative program. If eligible, patients may be able to enroll in both programs to receive enhanced support for serious illness.

### Palliative Care



Begins as early as the day of diagnosis



Available at any stage of dementia



Can be provided alongside other treatments



Focuses on symptom relief, pain management, and emotional support



Dementia Care Program services based on eligibility

## Care Delivery Approach

The interdisciplinary care team delivers services by creating and maintaining a **person-centered care plan**, which includes details on patient goals, strengths, and needs; comprehensive assessment results; and recommendations for service providers and community-based social services/supports.

### Care Coordination

The care plan will identify the patient's primary care provider and specialists and outline the care coordination services needed to help manage the dementia and co-occurring conditions.



### Caregiver Services

Delaware Palliative will assess and address caregiver needs and include the caregiver as part of the care team as appropriate. Caregiver services will include ongoing monitoring and support via 24/7 access to a support line.

## Example of how our Dementia Care Program can help

**Patient & Family Caregiver:** Mildred is an 86-year-old woman living alone with moderate dementia. She has regular appointments with her primary care doctor, dentist, and optometrist, and gets her medications from a local pharmacist. Her caregiver, Anne, is her 35-year-old granddaughter who visits daily to help with housekeeping and personal care tasks. Anne is a mom with a full-time job.

**Initial Challenges:** Mildred's dementia symptoms were steadily worsening, and her primary care doctor was not equipped to provide the specialized care she needed. As her condition progressed, Mildred found it increasingly difficult to manage her medications and attend appointments on her own. Meanwhile, Anne, who had been her primary caregiver, was feeling overwhelmed and exhausted by the demands of caregiving. Despite wanting to find a suitable nursing home for Mildred, the high costs made it an unfeasible option.



**Help & Support Received:** Anne contacted Delaware Hospice, Inc. about the Dementia Care Program; they were able to work with Mildred's physician to confirm eligibility for program services. Mildred and Anne began collaborating with an interdisciplinary care team through the Delaware Hospice Dementia Care Program. Our Care Navigators connected her with transportation services, making it easier for her to attend appointments. Anne received caregiver training through Delaware Hospice, helping her manage Mildred's symptoms and cope with her own stress. Additionally, Mildred qualified for and benefited from Dementia Respite Services, allowing Anne to take much-needed breaks from her caregiving responsibilities. Now, Mildred and Anne are enjoying the time spent together and with family.

**DEMENTIA  
CARE PROGRAM**

Delaware Hospice™ • Delaware Palliative®



**Get the support you need.  
Call us today! 855-335-4677**



**Visit <https://delawarehospice.org/dementia-care-program/>**

# Support Groups

## Parkinson's Disease

Lewes CHEER Center  
34211 Woods Edge Dr  
Lewes, DE 19958  
302-645-3551

Every 4th Tuesday from 10:00 - 11:00  
Virtual option: [mflemingsmith@yahoo.com](mailto:mflemingsmith@yahoo.com)



Parkinson's Education & Support Group of Sussex County  
56 Lewes Ave  
Lewes, DE 19958

Visit [sussexcountyparkinsons.com](http://sussexcountyparkinsons.com) for this month's calendar of events  
Also provide education sessions, exercise classes (often hosted at RISE Fitness + Adventure), & more

Parkinson's Disease Delaware  
<https://pdde.org/>

Milford support group meeting on the 3rd Tuesday of each month 3-4pm at Milford Place (500 S Dupont Blvd, Milford, DE 19963).

This group is open to persons with Parkinson's disease, caregivers, spouses, partners, family.  
Contact: Giovanna 302-922-7164

Ocean View support group meeting on the 3rd Wednesday 1-2pm (30637 Cedar Neck Rd, Ocean View, DE 19970).

Lower Shore Parkinson's Support Group  
909 Progress Circle Salisbury, MD 21804  
(410) 749-3873  
[r-brown12@comcast.net](mailto:r-brown12@comcast.net) [PDLowerShore@gmail.com](mailto:PDLowerShore@gmail.com)

Modern Maturity Caregiver Resource Center Support group for people with Parkinson's  
Location: Dover, DE 19904 – Meeting in-person  
For more information, contact Dawn Morris at 302-734-1200, ext 186 or [dawn.morris@modern-maturity.org](mailto:dawn.morris@modern-maturity.org).

## Diabetes Management/Medical Nutrition Therapy

Coordinated Care Center  
1305 Savannah Road  
Lewes, DE 19958  
302-645-3100 extension 73293



# Support Groups



## Stroke

Beebe Healthcare Partnership with Jefferson Health  
Virtual via Zoom  
Email [stroke@jefferson.edu](mailto:stroke@jefferson.edu) for link  
Every 2nd Tuesday at 2:00

PAM Health  
22303 DuPont Blvd  
Georgetown, DE 19947  
302-440-4866  
Every 3rd Tuesday at 3:30

Stroke Support Group- Newark Senior Center  
200 White Chapel Dr., Newark, DE 19713  
302-985-7727

Delaware Stroke Initiative Support Group  
Christiana Hospital  
4755 Ogletown-Stanton Road  
Newark, DE 19718  
First Thursday of every month 4-5:30 p.m.  
Contact: [squiertoyldr@gmail.com](mailto:squiertoyldr@gmail.com)

Brain Aneurysm Support Group  
Christiana Hospital  
4755 Ogletown-Stanton Road Room  
1100 Newark, DE 19718  
Third Wednesday of every month 5:30-6:30 p.m.  
302-733-1487

Milford Stroke Club  
Bayhealth Milford Rehabilitation  
21 W Clarke Avenue Milford, DE 19963  
Second Thursday of January, March, May, July, September, November 4-5:30 p.m.  
302-430-5962

# Support Groups

Nanticoke Stroke Support Group  
Seaford Library  
600 N. Market St Seaford, DE 19973  
Third Tuesday of the month 1:30-3:30 p.m.  
302-629-6224



University of Delaware Aphasia Support Group  
University of Delaware – STAR Campus  
540 S. College Avenue Newark, DE 19713  
Third Tuesday of the month 10-11 a.m.  
302-831-7100

Stroke Support Group Kent General Hospital Outpatient Center  
209 E. Main Street  
Middletown, DE 19709  
Second Thursday of February, April, June, August, October, December  
5:30-7 p.m.  
Contact: KimHolmes 302-744-6638

Stroke Education Group Union Hospital  
106 Bow Street  
Elkton, MD 21921  
Second Wednesday of every month 10:30 a.m.-12 p.m.  
Contact: Kpatterson@uhcc.com 410-398-4000  
Springside Plaza  
200 Biddle Avenue, #101  
Newark, DE 19702  
Third Friday of every month 12-1 pm  
Contact: Julia Santini 302-838-4700

Aphasia Support Group  
Christiana Hospital 4755  
Ogletown-Stanton Road  
Newark, DE 19718  
First Wednesday of every month 10-11 a.m.  
Contact: Mindy Myers, mmyers@christianacare.org 302-733-1014

# Support Groups

Springside Plaza Aphasia Book Club  
200 Biddle Avenue, #101  
Newark, DE 19702  
Mondays, 1-2 p.m. 302-838-4700

Mid-Shore Stroke Support Group  
1st Thursday of every month  
12:00 PM - 1:00 PM Eastern  
Virtual Zoom  
Nicole Leonard  
(410) 822-1000  
nleonard@umm.edu  
Preferred Contact Method: Email

## Cancer

Cancer Support Community Delaware  
Visit <https://cancersupportdelaware.org/download-this-months-calendar/>  
Delaware Breast Cancer Coalition  
18977 Munchy Branch Rd, Unit 1  
Rehoboth Beach, DE 19971  
302-212-2947 Visit <https://debreastcancer.org/dbcc-events/dbcc-calendar>



# Griswold Home Care

Griswold is an award-winning pioneer in the home care industry, with over four decades of experience and a storied legacy of compassion and integrity. We believe Care Professionals are the foundation of our success, and people deserve to live where they love as they age. Our commitment to innovation is based on our desire to improve the lives of everyone we touch, right here in our own community.

At Griswold, care is personal, and we'll work with you to create a care plan that best meets your needs, including companionship, homemaking, and personal care. We support those with certain conditions, illnesses, or injuries. We are proud to provide care for Veterans, Respite Care for those who need a break, and Around-the-Clock Care when the need for support is constant. We also embrace innovation, where technology meets home care in a safe and effective way.

## Essential Care

- Companionship
- Personal Care
- Homemaking

## Companionship

- Shopping & errand assistance
- Writing & sending cards, notes, & emails
- Supporting hobbies & interests
- Providing companionship at social events

## 24/7 Virtual Monitoring

Griswold Home Care for Sussex & Kent Counties provides peace of mind with its around-the-clock virtual care agent. This innovative, audio-based AI technology is specially designed for in-home settings, providing continuous insights to ensure the health and safety of your loved one. The state-of-the-art system can detect falls, physical distress, and calls for help, as well as identify early signs of cognitive decline, infection, medication errors, and potential urinary tract infections. This empowers Griswold's caregiving team to intervene early, manage symptoms effectively, and reduce hospitalizations. Live Assured knowing Griswold is committed to using technology in safe and effective ways to enhance your loved one's care.

## Additional Support

- Dementia Care Support
- Post Surgery & Rehabilitation Care Support
- Hospice & Palliative Care Support
- Neuromuscular Care Support
- Fall Prevention & Recovery Support

## Other Types of Care

- Respite Care
- Veterans Care
- Around-the-clock Care
- Overnight Care
- Live-In Care

# How Can You Help Support Our Mission & Vision?

Since it was established in 1989, Beebe Medical Foundation has worked to secure philanthropic support to help fulfill Beebe Healthcare's charitable mission to encourage healthy living, prevent illness, & restore optimal health to the people residing-in, working-in, or visiting the communities it serves. As an independent, not-for-profit hospital, Beebe Healthcare relies on local support to continue serving our growing community.

The first major philanthropic gift made to Beebe Healthcare was from Mr. & Mrs. Benjamin F. Shaw in 1921. This gift built & equipped a 35-bed medical facility in Lewes, Delaware. Since that time, the community has continued to support Beebe Healthcare to fund new & ongoing medical programs, purchase lifesaving medical equipment, & for the construction & renovation of medical facilities. Beebe has a proud history of more than 100 years of service & continues to be the primary healthcare provider with multiple locations throughout Sussex County.

The Beebe Medical Foundation raises money to fulfill Beebe Healthcare's mission to encourage healthy living, prevent illness, & restore optimal health with the people residing, working, or visiting the communities we serve. The Foundation team works with donors in a variety of ways to ensure gifts are donated in a way that is important to them - whether restricted to a specific fund or unrestricted & directed towards the areas of greatest need. For more information, contact the Beebe Medical Foundation by calling 302-644-2900 or email [foundation@beebehealthcare.org](mailto:foundation@beebehealthcare.org). We thank you for your support!



Do you know of any other resources you would like to share?  
Please email [ljarrell@beebehealthcare.org](mailto:ljarrell@beebehealthcare.org)



